

QUARTER ROW

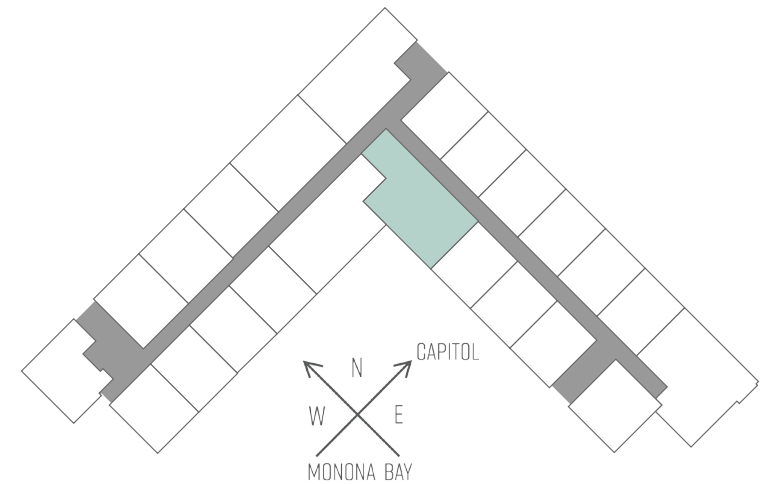
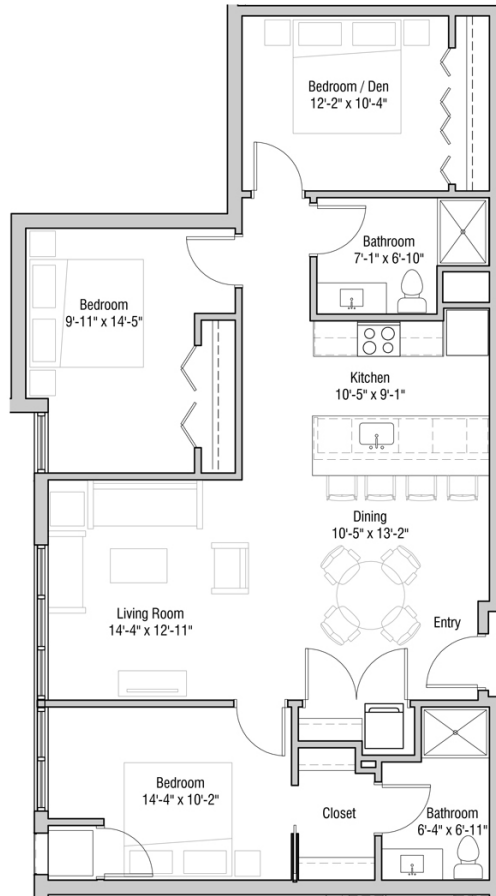
202 SOUTH BEDFORD STREET - MADISON, WI

THREE BEDROOM
TWO BATHROOM
1,163 SQUARE FEET

PRICING:

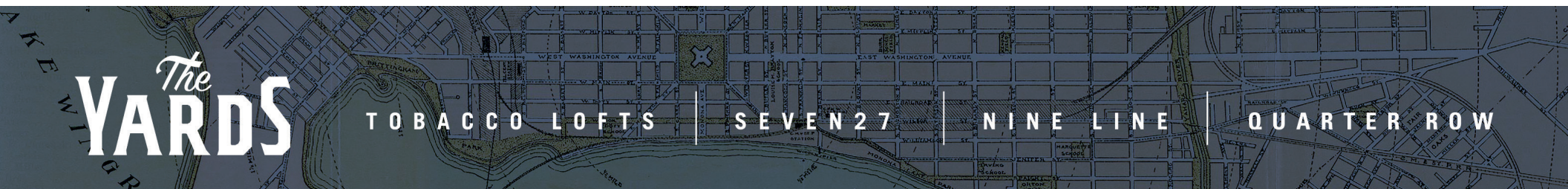
AVAILABILITY:

FEATURES:



PROFESSIONALLY MANAGED BY URBAN LAND INTERESTS

(608)661-7600 WWW.ULI.COM



The YARDS

TOBACCO LOFTS | SEVEN 27 | NINE LINE | QUARTER ROW